


## CATERPILLAR CS12GC ROLLER

### Major Service

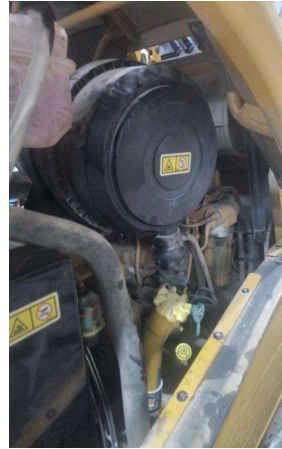
● 0 ● 14 ● 68 ● 26

Inspection Number	RP055791	Customer No	200000
Serial Number	GCS00534	Customer Name	AUSTRALIAN HAMMER SUPPLIES HIRE
Make	CATERPILLAR	Customer Email	
Model	CP12 GC (SMOOTH)	Works Order	RP055791
Equipment Family	ROLLER	Completed On	18/03/2026 4:10:48 PM
Asset ID	AHSH163	Inspector	Jordan Wunderlich
Location	AUSTRALIAN HAMMER SUPPLIES HIRE Unit 3/32 WILLIAMSON RD  INGLEBURN 2565	PDF Generated On	18/03/2026
		Machine Hours	911
Customer		Next Meter	1250

### General Info & Comments

● General Info/Comments

1000 hour service



## TASK SAFETY INSTRUCTIONS

- |  |      |
|--|------|
| ● 1.1 Wear Correct PPE at all times  | PASS |
| ● 1.2 All isolation and safe work procedures must be followed                      | PASS |
| ● 1.3 Identify task hazards and controls utilising hierarchy or controls model     | PASS |
| ● 1.4 Ensure a competent operator and spotter is utilised to move mobile equipment | PASS |
| ● 1.5 Ensure all mobile equipment is fundamentally stable                          | PASS |
| ● 1.6 Ensure three points of contact is maintained during access and egress        | PASS |
| ● 1.7 Ensure acceptable housekeeping standards are maintained at all times         | PASS |

## MACHINE GENERAL RUNNINGCHECKS

● 2.1 Check all work lights, beacon & reverse alarm for operation	PASS
● 2.2 Test all dash warning lights, gauges and audible alarms for correct operation	PASS
● 2.3 Check idle timer for correct shut down operation	PASS
● 2.4 Check operation of all three emergency stop buttons	PASS
● 2.5 Check operation of horn	PASS
● 2.6 Check operation of reverse camera	PASS
● 2.7 Check alternator charge voltage	PASS
● 2.8 Check operation of auto grease system by manually activating timer	PASS
● 2.9 Check fire system control panel for 'Normal'	N/A

#### PM FIRE SUPPRESSION SYSTEM

● 5.1 Ensure fire suppression bottle and components are securely mounted and in good condition	N/A
● 5.2 Ensure fire suppression is correctly charged	N/A
● 5.3 Inspect last charge date	DATE:2026-03-18T00:00:00.000000
● 5.4 Check all fire extinguishers are securely mounted and in good condition	PASS
● 5.5 Check all fire extinguishers are correctly charged	PASS
● 5.6 Inspect last charge date	DATE:2026-03-18T00:00:00.000000

#### PM ENGINE

● 6.1 Perform engine valve set	PASS
● 6.2 Inspect air intake system hoses, pipes, clamps for signs of dirt ingress	PASS
● 6.3 Inspect engine for oil or fuel leaks	PASS
● 6.4 Inspect engine components for missing clamps	PASS

● 6.5 Inspect exhaust system for signs of leaks, loose bolts or missing clamps	PASS
● 6.6 Inspect turbo for security and signs of leaks	PASS
● 6.7 Inspect condition of exhaust lagging	PASS
● 6.8 Inspect engine mounts for condition and loose hardware	PASS
● 6.9 Inspect alternator mount condition and adjustment	PASS
● 6.10 Inspect wiring condition and security	PASS
● 6.11 Inspect engine belts	PASS

#### PM ENGINE COOLING SYSTEM

● 7.1 Check coolant level	PASS
● 7.2 Check condition of radiator cap	PASS
● 7.3 Check condition of radiator core	PASS
● 7.4 Check cooling system for signs of leaks	PASS
● 7.5 Check hose and clamp condition	PASS
● 7.6 Inspect fan condition and operation	PASS
● 7.7 Inspect radiator and fan guard condition	PASS

#### PM SWING TRANSMISSION

● 8.1 Inspect swing transmission for signs of leaks	N/A
● 8.2 Inspect swing transmission oil level	N/A

#### PM HYDRAULIC SYSTEM

● 9.1 Check hydraulic oil level	PASS
● 9.2 Inspect hydraulic cylinders for leaks and security	PASS
● 9.3 Inspect hydraulic hoses for leaks, damage, security	PASS
● 9.4 Inspect hydraulic pump condition, leaks, security	PASS

● 9.5 Check Pilot Accumulator operation as per OEM Maintenance Procedure - Test Boom Down Functionality with engine off PASS

**PM FINAL DRIVES**

● 10.1 Inspect LHS final drive mount condition for leaks and security N/A

● 10.2 Inspect LHS oil level and mag plug condition N/A

● 10.3 Inspect RHS final drive mount condition for leaks and security N/A

● 10.4 Inspect RHS oil level and mag plug condition N/A

**PM UNDERCARRIAGE**

● 11.1 Inspect LHS track tension N/A

● 11.2 Inspect RHS track tension N/A

● 11.3 Inspect tracks for loose/missing bolts N/A

● 11.4 Inspect load and carrier rollers for signs of leaks N/A

● 11.5 Inspect idlers for signs of leaks N/A

● 11.6 Inspect sprocket segments condition N/A

● 11.7 Inspect track frame for cracks, lose or missing hardware N/A

**PM FRAME AND BODY**

● 12.1 Check panels for damage and security PASS

● 12.2 Check access steps and walkway condition PASS

● 12.3 Inspect boom condition – cracks, missing clamps, damaged pipes, excessive movement, lubrication N/A

● 12.4 Inspect stick condition – cracks, missing clamps, damaged pipes, excessive movement, lubrication N/A

● 12.5 Inspect quick hitch condition and operation N/A

● 12.6 Inspect bucket condition – cracks, wear, damage, mounts N/A

● 12.7 Inspect GET condition and hardware N/A

### PM ELECTRICAL SYSTEM

<input checked="" type="radio"/>	13.1 Check battery condition	PASS
<input checked="" type="radio"/>	13.2 Check battery terminal condition	PASS
<input checked="" type="radio"/>	13.3 Check battery security	PASS
<input checked="" type="radio"/>	13.4 Check battery box drain is clear	PASS
<input checked="" type="radio"/>	13.5 Check wiring condition and security	PASS

### PM GREASE SYSTEM

<input checked="" type="radio"/>	14.1 Check all points for acceptable lubrication	PASS
<input checked="" type="radio"/>	14.2 Inspect grease system operation	PASS
<input checked="" type="radio"/>	14.3 Check grease line condition	PASS
<input type="radio"/>	14.4 Refill grease tank	N/A
<input type="radio"/>	14.5 Lubricate bucket linkage	N/A
<input type="radio"/>	14.6 Lubricate blade linkage	N/A
<input type="radio"/>	14.7 Lubricate boom & stick linkage	N/A
<input type="radio"/>	14.8 Lubricate swing bearing	N/A

### PM OPERATOR STATION

<input checked="" type="radio"/>	15.1 Check all doors for correct opening and closing adjustments and operation	PASS
<input checked="" type="radio"/>	15.2 Inspect condition of door seals	PASS
<input checked="" type="radio"/>	15.3 Check window glass and seal condition	PASS
<input checked="" type="radio"/>	15.4 Check mirror condition and adjustments	PASS
<input checked="" type="radio"/>	15.5 Fill window washer reservoir	PASS
<input checked="" type="radio"/>	15.6 Inspect air con vents condition	PASS
<input checked="" type="radio"/>	15.7 Inspect seat belt and mounting hardware	PASS

● 15.8 Inspect seat condition, operation and mounting *PASS*

● 15.9 Replace cabin A/C filter *PASS*

## OIL SAMPLING

● 16.1 Engine *PASS*

## PM POST SERVICE INSPECTION CHECKS

● 17.1 All inspections have been completed and rectified as required *PASS*

● 17.2 All safety related defects have been repaired or reported *PASS*

● 17.3 All defects have been noted and reported *PASS*

● 17.4 All fluids are at correct level and drain plugs tight *PASS*

● 17.5 All oil samples have visually been inspected and any notable signs of contamination have been reported *PASS*

● 17.6 All replaced filters have been cut and inspected and photos added to CAT Inspect and reported to supervisor *PASS*

● 17.7 Machine has been recommissioned and ready for operation *PASS*

● 17.8 PM service notification marked off in Vision Link *PASS*

## DEFECTS IDENTIFIED

● 18.1 DEFECTS IDENTIFIED *no*

## OIL USED

● 19.1 Hydraulic oil *1.5*

● 19.2 Engine oil *10.5*

● 19.3 Slew oil *0*

● 19.4 Gear oil *0*

● 19.5 Coolant *0*